



Region 05, Pacific Southwest Region, Stanislaus National Forest

Forest Service News Release

Benjamin Cossel, Public Affairs Officer
Stanislaus National Forest
209.288.6261
Benjamin.cossel@usda.gov

Stanislaus NF to Begin RX Burn Operations Near Pinecrest

SONORA, California June 19, 2023 – Taking advantage of favorable weather conditions and availability of resources, crews with the Stanislaus National Forest will begin prescribed fire operations in the Experimental Forest, approximately two miles southeast of the Pinecrest area. Operations are set to begin within the next week and crews will look to burn approximately 44 acres.

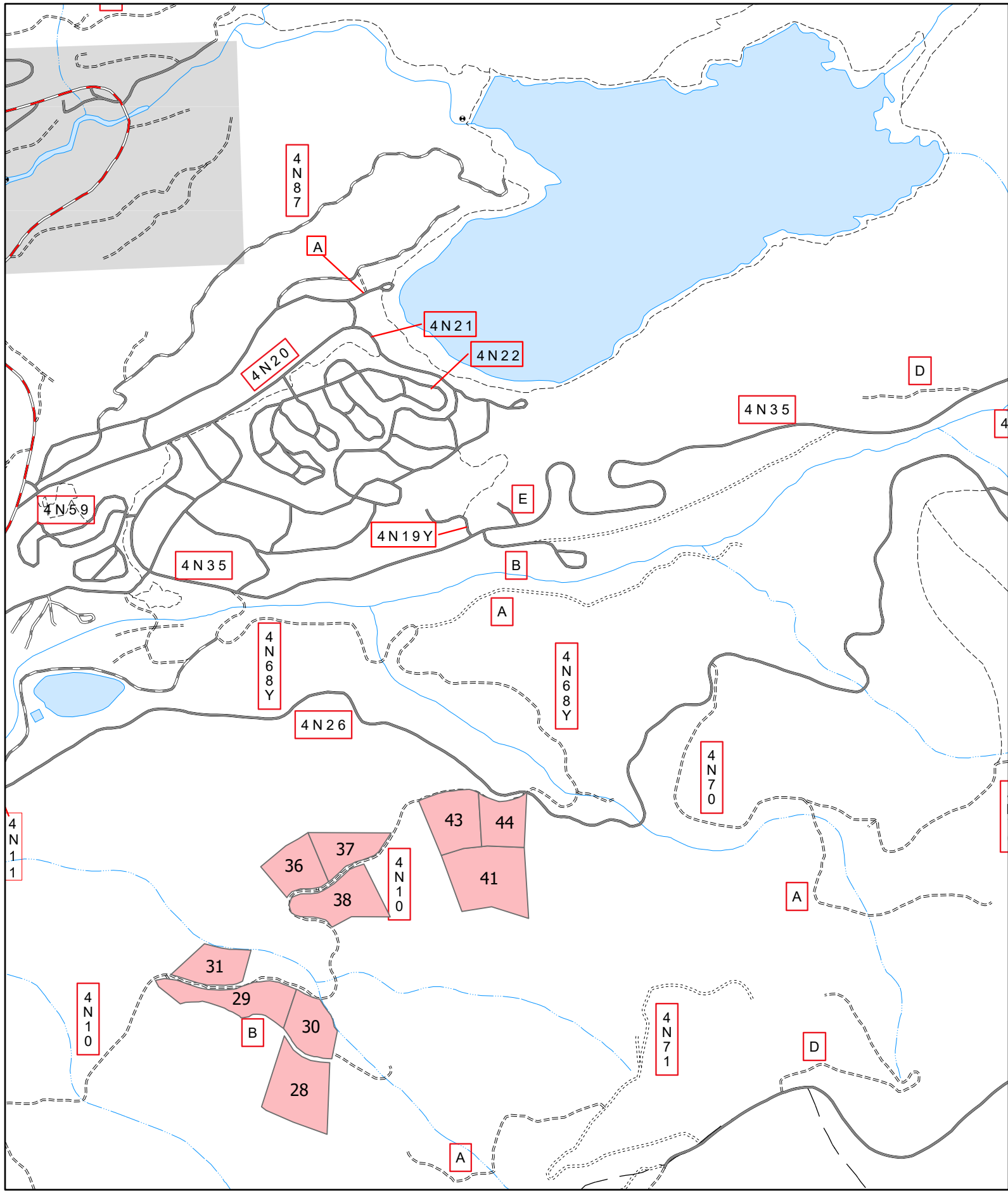
The prescribed burn is designed to target treated National Forest lands within the Wildfire Crisis Strategic Landscape on the Stanislaus National Forest. The Stanislaus Landscape was one of the initial landscapes identified by the Forest Service's 10-year Wildfire Crisis Strategy in 2022.

Up to 44 acres can be treated with low-intensity fire, with planned ignition on approximately 15 acres daily. Daily area burnt will vary based on environmental conditions and smoke production.

With the prescribed burn, fire professional will reduce the buildup of flammable forest fuels, both ground fuels and ladder fuels; reduce the threat of uncontrolled, large and damaging fires; treat activity generated fuels; improve protection for life, property, and resources. Prescribed burning is an effective, cost-efficient method of reducing flammable forest fuels, improving firefighting capabilities, and reducing the impacts of large, uncontrolled damaging wildland fires.

Smoke may be visible from Hwy. 108. Fire managers are working closely with local air districts and the California Air Resources Board to Mitigate the effects of smoke on the public. Please do not report as a wildfire.

Experimental Forest Prescribed Burn FY23 (Timing of Fire)



Experimental Forest Units FY23

0 0.45 0.9 1.8 Miles

